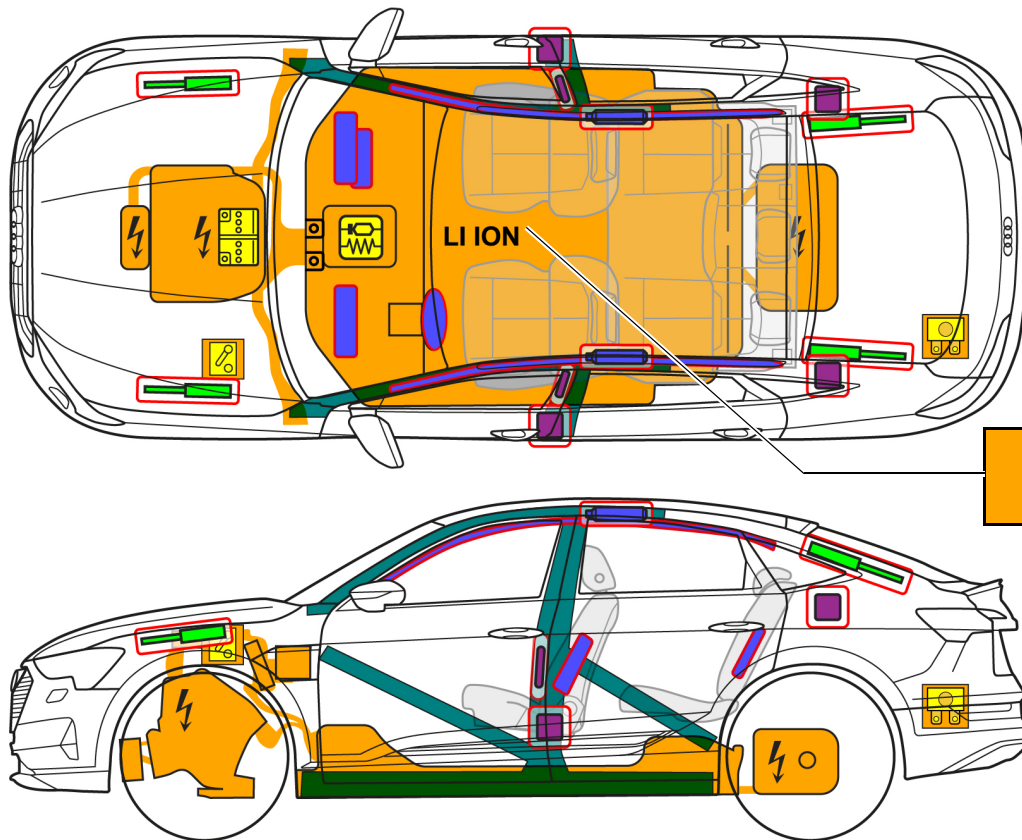




Audi Q8 / SQ8 e-tron

SUV incl. Sportback, as of 2023



Note: The illustration shows the maximum possible range of equipment.

	Airbag		Stored gas inflator		Seat belt pretensioner		SRS control unit		Pedestrian protection active system
	Automatic roll-over protection system		Gas strut / preloaded spring		High-strength zones		Special attention		
	Battery, low-voltage		Ultra-capacitor, low-voltage		Fuel tank		Gas tank		Safety valve
	Battery, high-voltage		Power cable, high-voltage		Separator, high-voltage		Fuse box, disabling high-voltage system		Ultra-capacitor, high-voltage
	High-voltage separator to low voltage		Fuse box, disabling high-voltage to low voltage		High-voltage component				



Audi Q8 / SQ8 e-tron

SUV incl. Sportback, as of 2023

1. Identification / recognition



The electric motor is silent. The display on the left of the instrument cluster (power meter) indicates whether the electric drive is switched "OFF" or "READY" for operation.

Charging port



Logo Q8



Engine compartment (orange cable)



Q8 e-tron

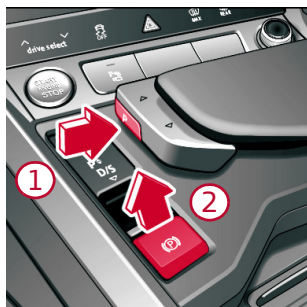


Q8 e-tron Sportback

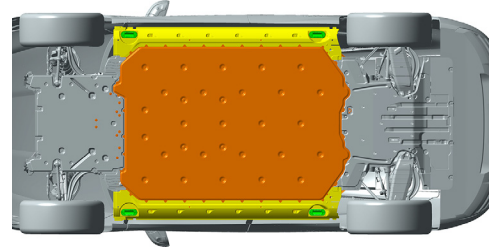
2. Immobilization / stabilization / lifting

Immobilize the vehicle

Press the Park button "P" and apply the parking brake



Lifting points

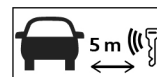


Suitable lifting points

High-voltage battery

Switch ignition off (power meter display "Off")

Press the START-STOP button without depressing the brake pedal

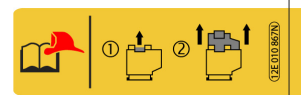
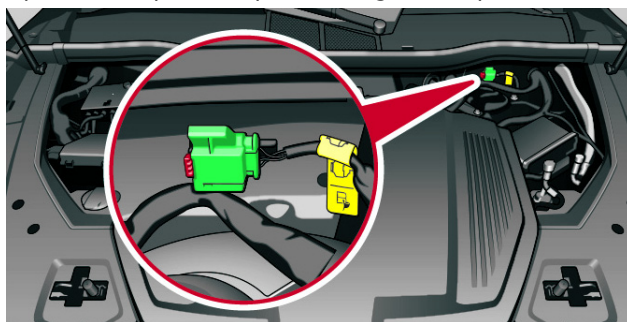


3. Disable direct hazards / safety regulations

Deactivate the high voltage system



Option 1: (Separation point in engine compartment)



1 Pull out red tab

2 Pull out black connector





Audi Q8 / SQ8 e-tron

SUV incl. Sportback, as of 2023

Option 2: (Fuse in boot)
 Raise underbody Remove flap Pull out fuse

Do not touch, cut or open high voltage components or the high-voltage battery. Wear suitable safety equipment.

In the event of an accident in which the airbags are deployed, the high-voltage system will be automatically deactivated. The high-voltage system is de-energised approx. 20 seconds after deactivation.

Disconnect the 12-volt battery

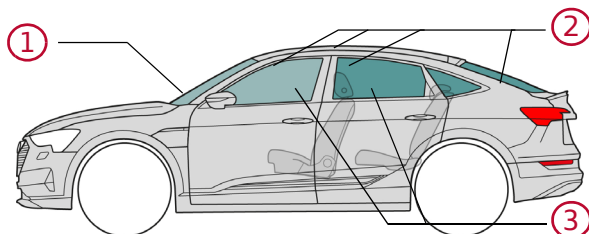
The 12-volt battery is located at the front end of the vehicle under the plenum chamber cover.

The black battery earth cable is bolted to the body either at the front plenum chamber wall (1) or at the suspension strut (2). The earth connection (negative terminal) of the battery can be separated from the body contact point here.

Separate from charging station (emergency release)

Remove the cover Pull the yellow loop Disconnect the charging connector

4. Access to the occupants



Glass types:

- ① Composite safety glass
- ② Single-layer safety glass
- ③ Side windows, optional Composite safety glass

5. Stored energy / liquids / gases / solids

LI ION 400 V



Audi Q8 / SQ8 e-tron

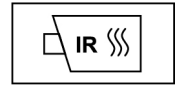
SUV incl. Sportback, as of 2023



12 V



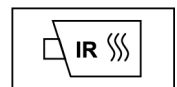
There is a risk of a thermal reaction in the high-voltage battery if coolant escapes from the battery cooling system. Monitor the temperature of the high-voltage battery.



6. In case of fire



Lithium-ion batteries can self-ignite spontaneously, sometimes several hours after an event causing damage or incorrect use, and can re-ignite after a fire has been suppressed. Wear suitable safety equipment.



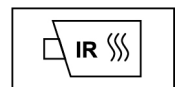
7. In case of submersion

After recovering the vehicle from the water, deactivate the high-voltage system (see Section 3) and allow the water to drain off. Wear suitable safety equipment.

8. Towing / transportation / storage



Lithium-ion batteries can self-ignite, or re-ignite after a fire has been extinguished.



If the vehicle has been involved in an accident or if the HV battery is damaged or appears to be damaged: Deactivate the high-voltage system (see Section 3). Park the vehicle at a safe distance, at least 5 m, from buildings and other vehicles (quarantine area).



Do not tow a vehicle that has been involved in an accident on its drive axles.



9. Important additional information

10. Explanation of pictograms used

Flammable	Explosive	Caustic, skin irritant	Hazardous to human health	Environmental hazard	Electric vehicle	Warning High voltage	Caution, danger
	LI ION						
Use lots of water to extinguish the fire.	Lithium-ion battery	Dangerous voltage	Release the bonnet	Unlock luggage compartment	Use thermal infrared camera	Remove smart key	